



W. Garrett Owen  
owen.367@osu.edu

Volume 13 Number 16 March 2024

# Daminozide Dilemmas: Avoiding Flower Bleaching in Spring Bedding Plants

*Daminozide is a widely used plant growth retardant (PGR) for producing compact spring flowering bedding plants; however, growers should be aware that it can induce flower bleaching or breaking in flower color.*

Plant growth retardants (PGRs) are useful tools for controlling plant height in greenhouse floriculture crops. There are several PGR products available to control plant height including those with active ingredients of ancymidol, chlormequat chloride, daminozide, flurprimidol, paclobutrazol, and uniconazole. Each of these PGRs vary in their relative activity and efficacy which are influenced by factors such as application method and concentration, plant species and growth stage, and environmental conditions.

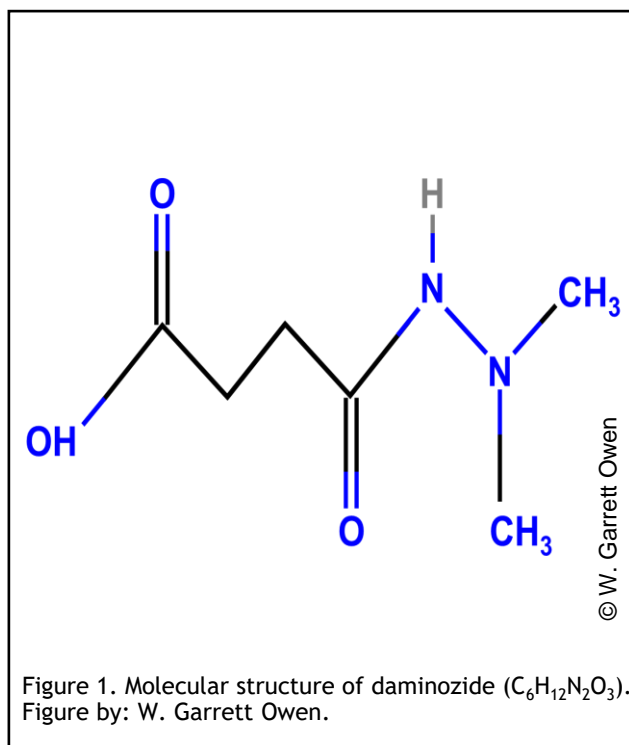


Figure 1. Molecular structure of daminozide (C<sub>6</sub>H<sub>12</sub>N<sub>2</sub>O<sub>3</sub>).  
Figure by: W. Garrett Owen.

Of the PGR products available, those formulated with the active ingredient daminozide (Fig. 1) are widely used on spring flowering bedding plants to control internode elongation resulting in compact plants (Figs. 2 and 3). It can also delay flowering. Daminozide is effective as a foliar spray and most effective under cooler conditions.

## 2024 Sponsors



Funding the Future of Floriculture

Ball®

fine



P.L. LIGHT SYSTEMS  
THE LIGHTING KNOWLEDGE COMPANY

Reprint with permission from the author(s) of this e-GRO Alert.

## Calibrachoa 'Kona Red'

### Daminozide (ppm) spray

0

1,250

2,500

5,000

10,000



Photos taken 21 days after application

Figure 2 Daminozide foliar sprays applied at increasing concentrations to control growth of calibrachoa 'Kona Red'. Plants were sprayed with 0, 1,250, 2,500, 5,000, or 10,000 ppm daminozide at a volume of 2 qt. per 100 sq. ft. Flower bleaching did not occur but time to flower was delayed above 5,000 ppm daminozide. Photo by: W. Garrett Owen.

© W. Garrett Owen

## Verbena 'Empress Sun Red'

### Daminozide (ppm) spray

0

1,250

2,500

5,000

10,000



Photos taken 21 days after application

Figure 3. Daminozide foliar sprays applied at increasing concentrations to control growth of verbena 'Empress Sun Red'. Plants were sprayed with 0, 1,250, 2,500, 5,000, or 10,000 ppm daminozide at a volume of 2 qt. per 100 sq. ft. Flower bleaching and color breaks were observed at 5,000 and 10,000 ppm daminozide. Photo by: W. Garrett Owen.

© W. Garrett Owen

Upon spray application, daminozide is absorbed by leaf tissue and translocated throughout the plant. Daminozide interferes with gibberellic acid biosynthesis thereby reducing the production of active gibberellins, leading to a decrease in cell elongation and thus plant height.

While daminozide is used to control plant height, growers should be aware that it can lead to flower bleaching (Fig. 3) and/or color breaks (Fig. 4), especially in plants with red, blue, or purple flowers. Additionally, high concentrations of daminozide can cause flower bleaching and color breaks (Fig. 5). Daminozide's primary mechanism involves inhibiting the flavonoid biosynthetic pathway, which is essential for producing flavonoids, particularly anthocyanins responsible for red, blue, and purple hues in flowers. Consequently, this inhibition leads to a decrease in anthocyanin synthesis and an increase in anthoxanthins, which are flavonoids that do not contribute to red, blue, or purple hues. As a result, flowers exhibit diminished intensity of these colors, resulting in a bleaching effect.

# Verbena 'Empress Sun Red'

## Daminozide (ppm) spray



© W. Garrett Owen

Photos taken 21 days after application

Figure 4. Daminozide foliar sprays applied at increasing concentrations to control growth of verbena 'Empress Sun Red'. Plants were sprayed with 0, 1,250, 2,500, 5,000, or 10,000 ppm daminozide at a volume of 2 qt. per 100 sq. ft. Flower bleaching and color breaks (white streaks) were observed at 5,000 and 10,000 ppm daminozide. Each flower represents a different plant. Photo by: W. Garrett Owen.



## Verbena 'Empress Sun Red'

0 ppm  
Daminozide



10,000 ppm  
Daminozide



© W. Garrett Owen

Figure 5. Verbena 'Empress Sun Red' sprayed with 0 (left) or 10,000 (right) ppm daminozide at a volume of 2 qt. per 100 sq. ft. Flower bleaching and color breaks (white streaks) were observed at 10,000 ppm daminozide. Photos by: W. Garrett Owen.

To prevent daminozide-induced flower bleaching, greenhouse growers can adopt specific best practices for using daminozide and consider using alternative (PGRs). Here are a few strategies to consider:

1. **Review Plant Culture Sheets:** Check plant- or cultivar-specific culture sheets for caution statements avoiding the application of daminozide.
2. **Optimal Application Conditions:** Apply daminozide under conditions that enhance its absorption and efficacy. This includes spraying during high humidity, on cloudy days, at lower temperatures, and when the air is calm to ensure slow drying on the leaf surface, which facilitates better absorption.
3. **Proper Plant Preparation:** Ensure plants are well-watered but with dry leaves at the time of application. Wilted plants may absorb less PGR, and wet leaves can dilute the concentration, reducing effectiveness.
4. **Avoid Overhead Irrigation Shortly After Application:** To prevent washing off the PGR before it has been absorbed by the leaves, avoid overhead irrigation soon after applying daminozide.
5. **Avoid Overhead Irrigation Shortly After Application:** To prevent washing off the PGR before it has been absorbed by the leaves, avoid overhead irrigation soon after applying daminozide.
6. **Timing and Concentration:** Apply daminozide just as plants begin to rapidly elongate and carefully follow the mixing instructions on the product labels to deliver the desired concentration. Adjust the spray rates based on the plant's growth stage, with typical spray rates for young plants ranging from 1,500 to 2,500 ppm and higher rates of up to 5,000 ppm for finish plants.
7. **Trial:** Conduct an in-house trial to determine the foliar spray concentration rate and if flower color bleaching occurs.
8. **Use Daminozide Alternatives:** Use other PGRs that inhibit gibberellin biosynthesis such as ancymidol, chlormequat chloride, daminozide, flurprimidol, paclobutrazol, and uniconazole.

By implementing these best practices and considering alternatives to daminozide, greenhouse growers can effectively manage plant growth while minimizing the risk of flower bleaching or breaks.

**e-GRO Alert**

[www.e-gro.org](http://www.e-gro.org)

**CONTRIBUTORS**

Dr. Nora Catlin  
Floriculture Specialist  
Cornell Cooperative Extension  
Suffolk County  
[nora.catlin@cornell.edu](mailto:nora.catlin@cornell.edu)

Dr. Chris Currey  
Assistant Professor of Floriculture  
Iowa State University  
[ccurrey@iastate.edu](mailto:ccurrey@iastate.edu)

Dr. Ryan Dickson  
Greenhouse Horticulture and  
Controlled-Environment Agriculture  
University of Arkansas  
[ryand@uark.edu](mailto:ryand@uark.edu)

Dan Gilrein  
Entomology Specialist  
Cornell Cooperative Extension  
Suffolk County  
[dog1@cornell.edu](mailto:dog1@cornell.edu)

Dr. Chieri Kubota  
Controlled Environments Agriculture  
The Ohio State University  
[kubota.10@osu.edu](mailto:kubota.10@osu.edu)

Heidi Lindberg  
Floriculture Extension Educator  
Michigan State University  
[wolleage@anr.msu.edu](mailto:wolleage@anr.msu.edu)

Dr. Roberto Lopez  
Floriculture Extension & Research  
Michigan State University  
[rglopez@msu.edu](mailto:rglopez@msu.edu)

Dr. Neil Mattson  
Greenhouse Research & Extension  
Cornell University  
[neil.mattson@cornell.edu](mailto:neil.mattson@cornell.edu)

Dr. W. Garrett Owen  
Sustainable Greenhouse & Nursery  
Systems Extension & Research  
The Ohio State University  
[owen.367@osu.edu](mailto:owen.367@osu.edu)

Dr. Rosa E. Raudales  
Greenhouse Extension Specialist  
University of Connecticut  
[rosa.raudales@uconn.edu](mailto:rosa.raudales@uconn.edu)

Dr. Alicia Rihn  
Agricultural & Resource Economics  
University of Tennessee-Knoxville  
[arihn@utk.edu](mailto:arihn@utk.edu)

Dr. Debalina Saha  
Horticulture Weed Science  
Michigan State University  
[sahadeb2@msu.edu](mailto:sahadeb2@msu.edu)

Dr. Beth Scheckelhoff  
Extension Educator - Greenhouse Systems  
The Ohio State University  
[scheckelhoff.11@osu.edu](mailto:scheckelhoff.11@osu.edu)

Dr. Ariana Torres-Bravo  
Horticulture / Ag. Economics  
Purdue University  
[torres2@purdue.edu](mailto:torres2@purdue.edu)

Dr. Brian Whipker  
Floriculture Extension & Research  
NC State University  
[bwhipker@ncsu.edu](mailto:bwhipker@ncsu.edu)

Dr. Jean Williams-Woodward  
Ornamental Extension Plant Pathologist  
University of Georgia  
[jwoodwar@uga.edu](mailto:jwoodwar@uga.edu)

Copyright ©2024

Where trade names, proprietary products, or specific equipment are listed, no discrimination is intended and no endorsement, guarantee or warranty is implied by the authors, universities or associations.

**Cooperating Universities**



**In cooperation with our local and state greenhouse organizations**



Metro Detroit Flower Growers Association

